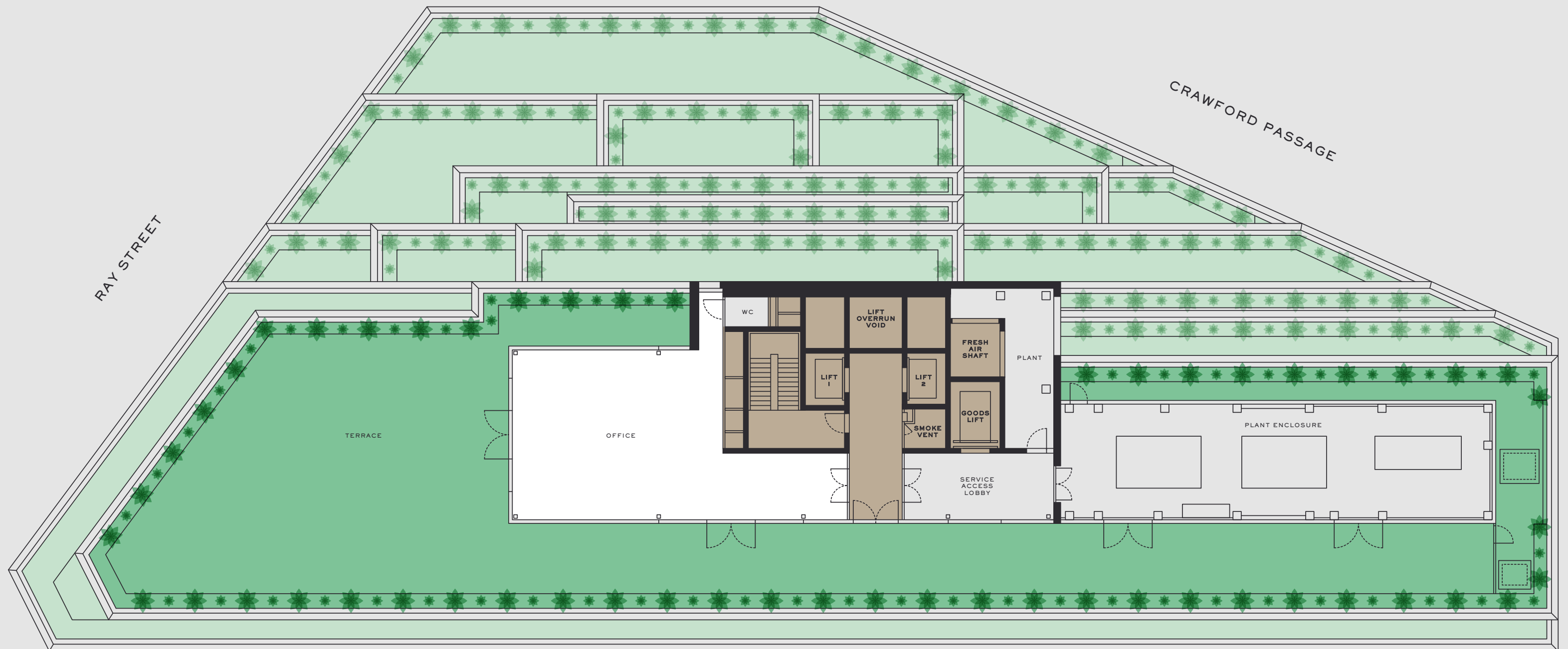


LEVEL SEVEN

THE
RAY
FARRINGTON

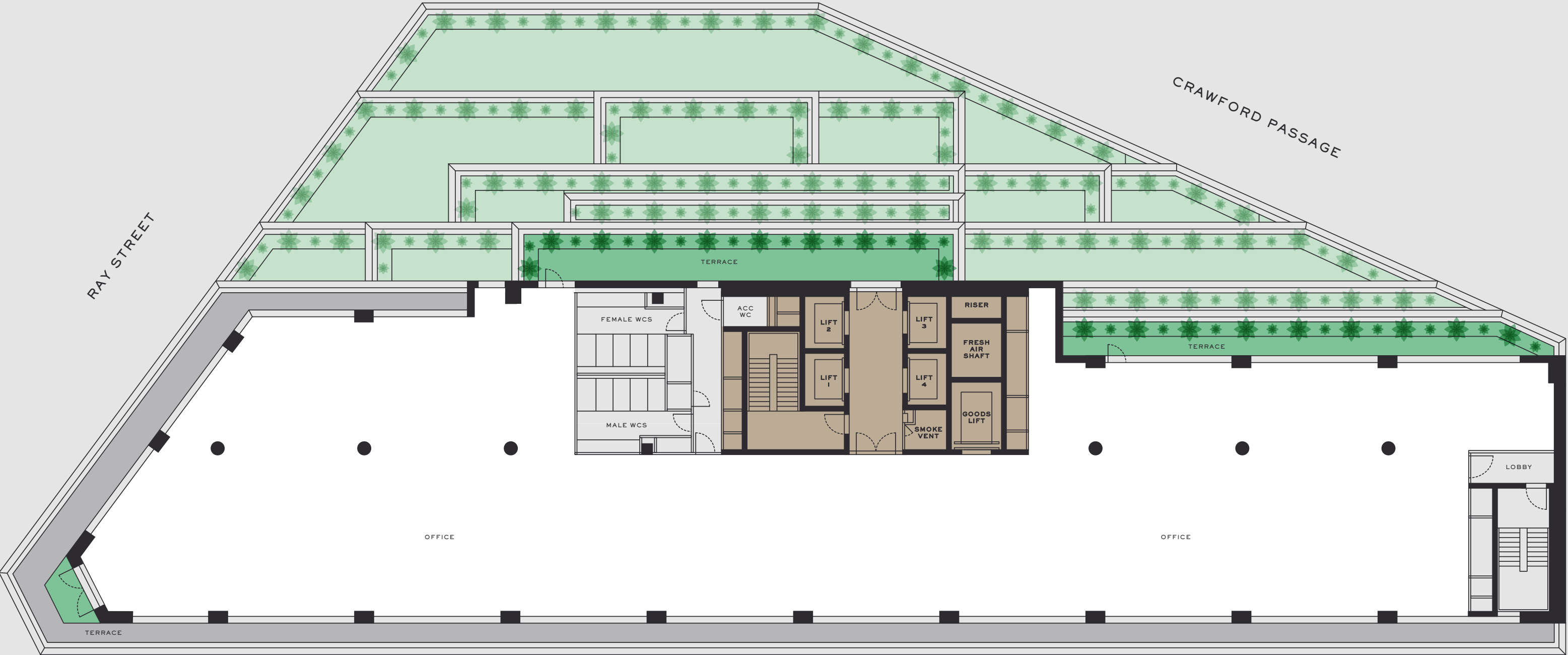
1,374 SQ FT



- Office - 1,374 sq ft
- Terrace - 4,665 sq ft
- Core
- Lower Terraces

FARRINGTON ROAD





- Office - 9,152 sq ft
- Terrace - 737 sq ft
- Core
- Lower Terraces

FARRINGTON ROAD



LEVEL FIVE

THE
RAY
FARRINGTON

12,413 SQ FT



- Office - 12,413 sq ft
- Terrace - 186 sq ft
- Core
- Lower Terraces

FARRINGTON ROAD



LEVEL FOUR

THE
RAY
FARRINGTON

13,392 SQ FT



- Office - 13,392 sq ft
- Terrace - 526 sq ft
- Core
- Lower Terraces

FARRINGTON ROAD



LEVEL THREE

THE
RAY
FARRINGTON

14,514 SQ FT



- Office - 14,514 sq ft
- Terrace - 479 sq ft
- Core
- Lower Terraces

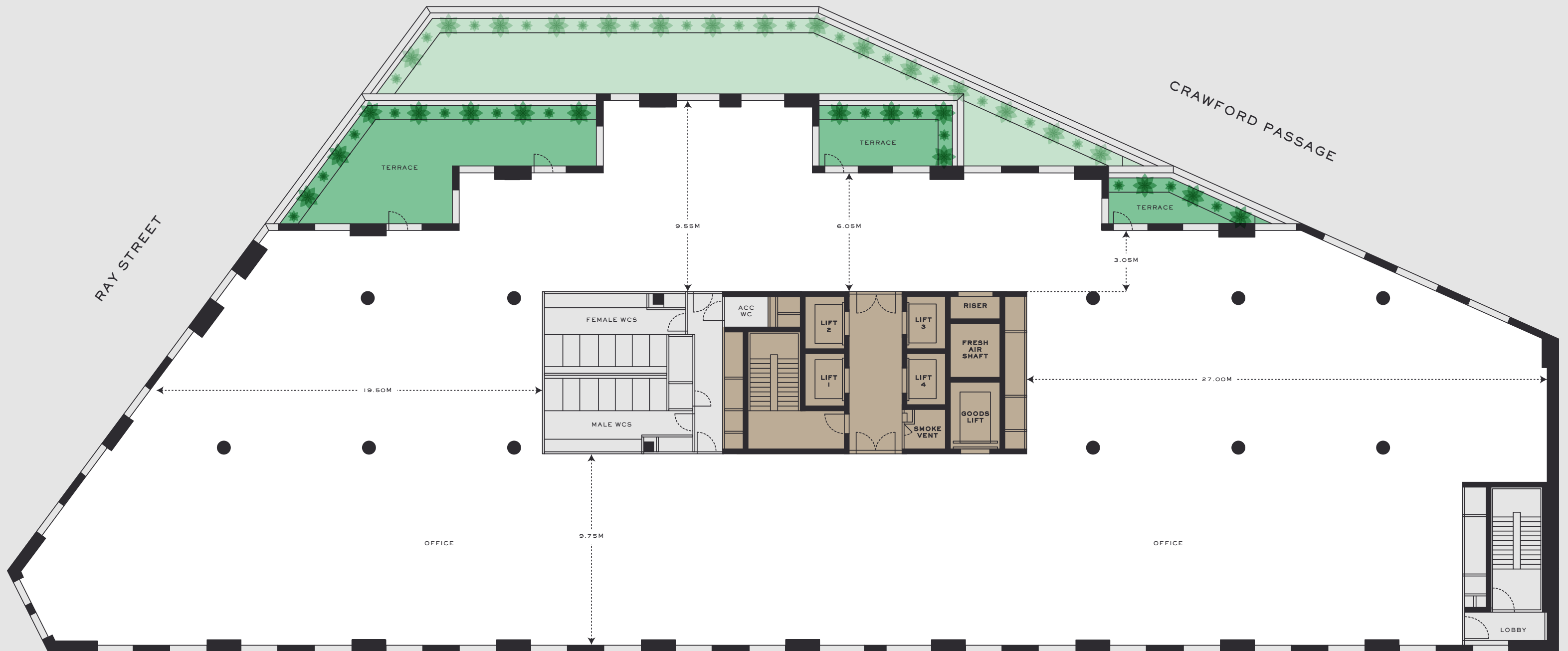
FARRINGTON ROAD



LEVEL TWO

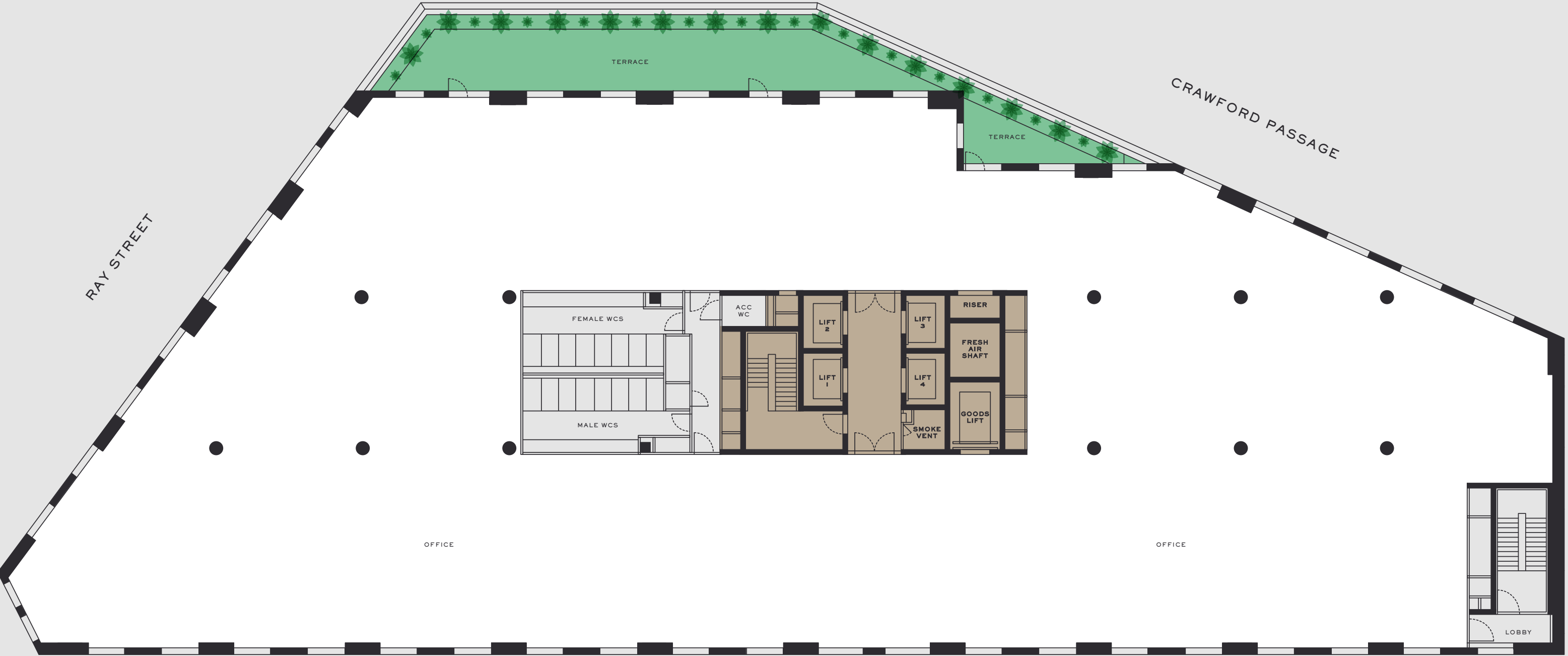
THE
RAY
FARRINGTON

15,391 SQ FT



- Office - 15,391 sq ft
- Terrace - 848 sq ft
- Core
- Lower Terraces

FARRINGTON ROAD



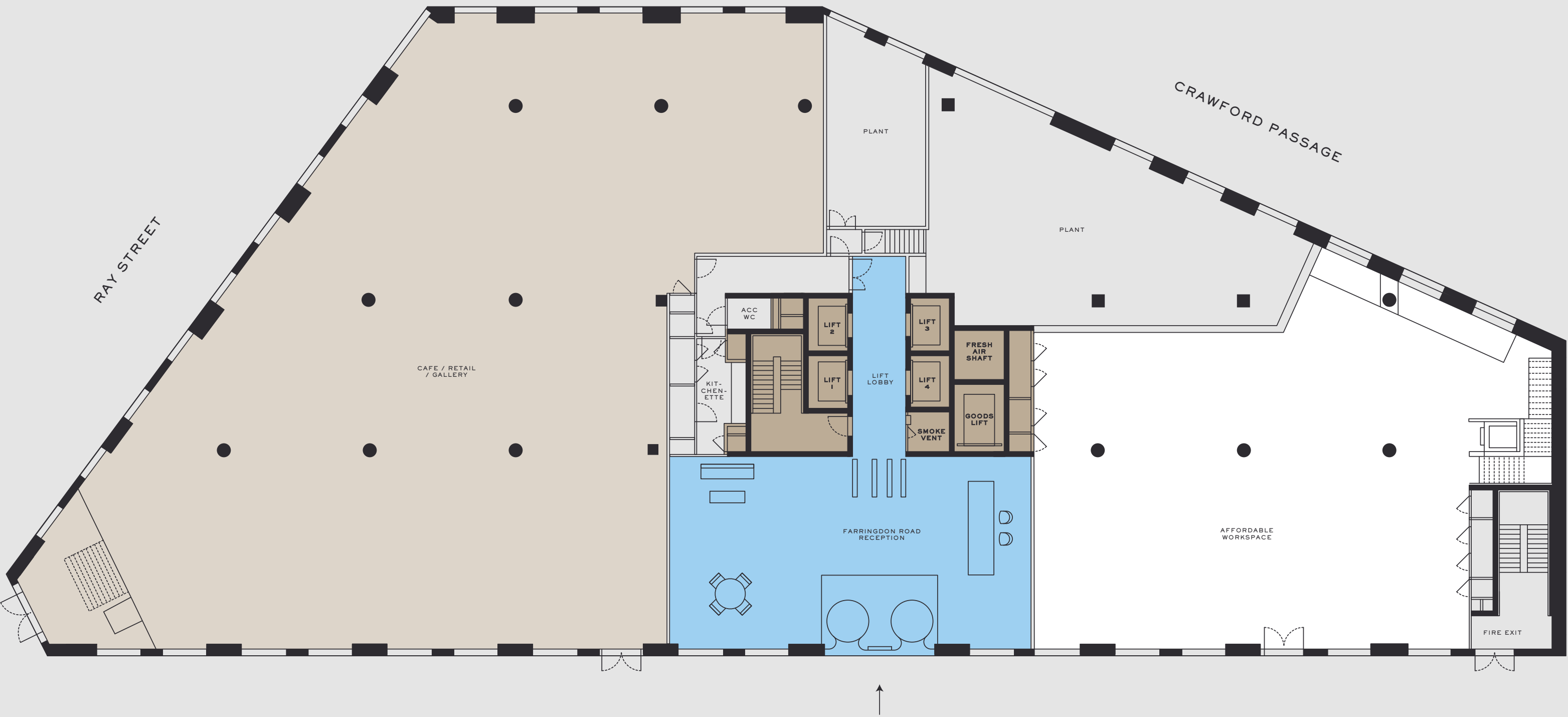
- Office - 16,674 sq ft
- Terrace - 1,009 sq ft
- Core

FARRINGTON ROAD



GROUND LEVEL

THE
RAY
FARRINGTON



- Affordable workspace - 4,163 sq ft
- Reception - 2,015 sq ft
- Cafe/Retail/Gallery - 9,275 sq ft
- Core

FARRINGTON ROAD



COURTYARD LEVEL

THE
RAY
FARRINGTON



- Affordable workspace - 1,835 sq ft
- Reception - 1,010 sq ft
- Retail/Restaurant - 2,644 sq ft
- Core
- Cycle Storage

FARRINGTON ROAD

